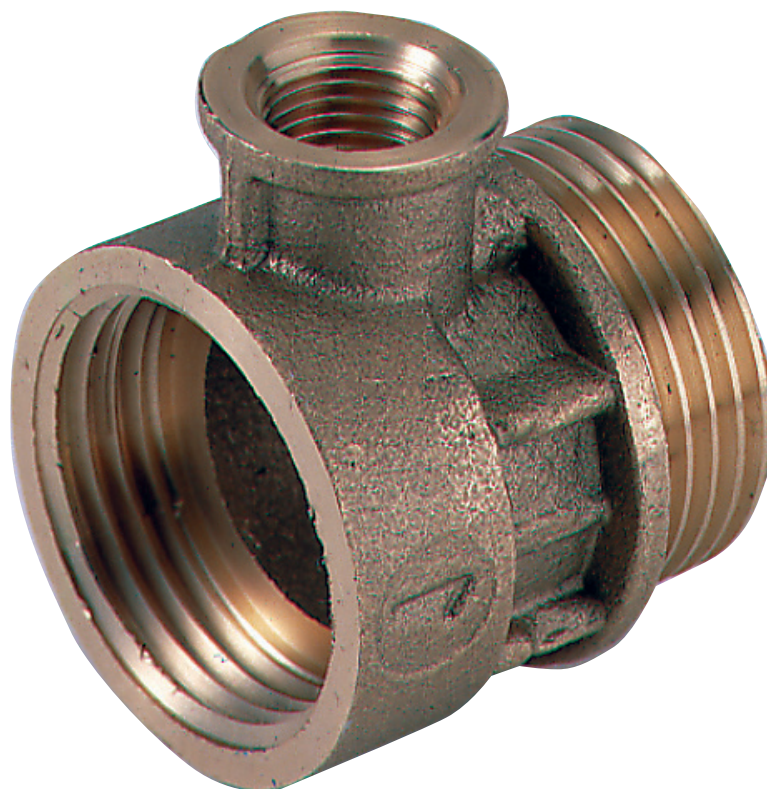


487

Pressure gauge nipple

Desbordes

Technical Data Sheet



Description

The Pressure gauge nipple Desbordes 487 has a bronze casing and is equipped with a female/male 1/4" plug.



487

Pressure gauge nipple DESBORDES

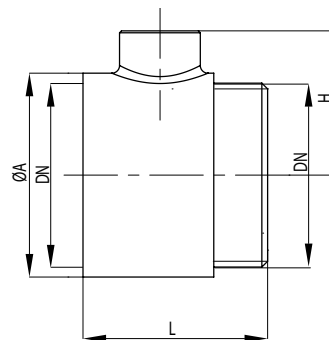
| DN | | Ref. | Weight kg |
|-------|-------|-----------------|--------------|
| mm | " | | |
| 15/21 | 1/2 | 149B7179 | 0,085 |
| 20/27 | 3/4 | 149B7180 | 0,107 |
| 26/34 | 1 | 149B7181 | 0,182 |
| 33/42 | 1 1/4 | 149B7182 | 0,267 |
| 40/49 | 1 1/2 | 149B7183 | 0,372 |
| 50/60 | 2 | 149B7184 | 0,523 |
| 60/70 | 2 1/4 | 149B7185 | 0,659 |
| 66/76 | 2 1/2 | 149B7186 | 0,725 |
| 80/90 | 3 | 149B7187 | 0,920 |

Technical features

| | |
|------------|-----------------------|
| Connection | Female/male 1/4" plug |
| Mediums | Water |

Sizing

| DN | | A | H | L |
|----|-------|------|------|------|
| mm | " | mm | mm | mm |
| 15 | 1/2 | 25 | 22 | 35,5 |
| 20 | 3/4 | 30,5 | 24,5 | 37,5 |
| 25 | 1 | 39 | 30 | 41 |
| 32 | 1 1/4 | 46 | 34,5 | 43 |
| 40 | 1 1/2 | 53 | 37,5 | 48 |
| 50 | 2 | 66 | 43,5 | 48 |
| 60 | 2 1/4 | 75 | 48,5 | 49 |
| 65 | 2 1/2 | 82 | 52 | 51 |
| 80 | 3 | 95 | 57,5 | 52 |



487

The descriptions and photographs contained in this product specification sheet are supplied by way of information only and are not binding.

Socla reserves the right to carry out any technical and design improvements to its products without prior notice. Warranty : All sales and contracts for sale are expressly conditioned on the buyer's assent to Socla terms and conditions found on its website at www.socla.com. Socla hereby objects to any term, different from or additional to Socla terms, contained in any buyer communication in any form, unless agreed to in a writing signed by an officer of Socla.



A WATTS Brand

Socla sas

365 rue du Lieutenant Putier • 71530 Virey-Le-Grand • France

Tel. +33 03 85 97 42 00 • Fax +33 03 85 97 42 42

contact@wattswater.com • www.socla.com

ISO 9001 version 2015 / ISO 18001