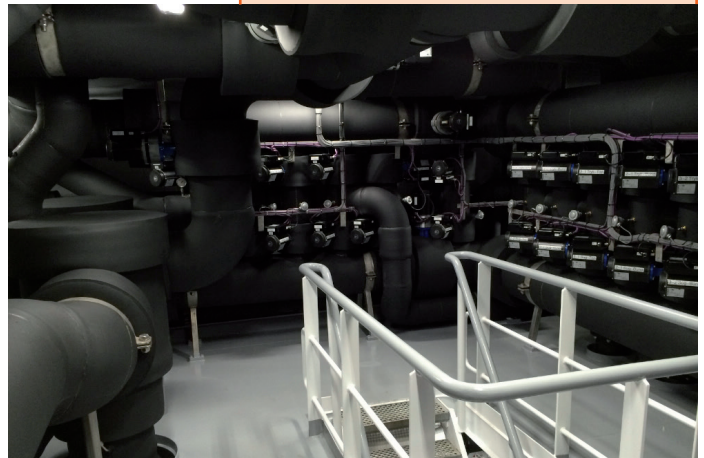
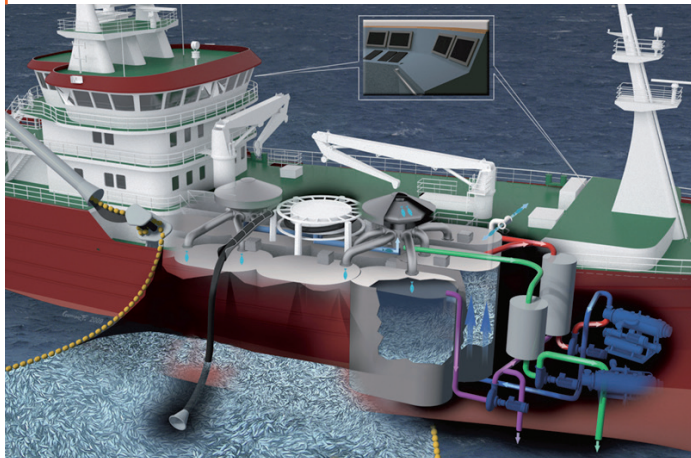



Valves in RSW System (Refrigerated Sea Water)



Background	Technical Data
<p>Today's fishing industry grows more competitive with every catch. Distances become greater. Quality demands increase. To not only survive, but to maximize profits, it is essential to utilize the best technology and finest equipment available. Whether it is a small boat or a large fishing vessel, refrigeration is essential for delivering top-quality products and receiving premium prices from today's demanding seafood buyers. RSW, or refrigerated sea water is a relatively new technology to the commercial fishing fleet.</p> <p>In simple terms, a RSW-system functions as follows : Seawater is recirculated by pump through the tanks (therefore product) and the chilling system. The seawater is chilled by the refrigeration machinery before it enters the tanks through a set of perforated plates or similar distribution devices. The chilled seawater passes upwards through the tank and layers of fish, thus keeping the fish semi-floating (in suspense) and at the same time cooling it.</p> <p>The water circulating system is arranged as such that the flow can be reversed by the operating certain valves in the main water distribution manifold.</p>	<ul style="list-style-type: none"> • Sea water • Temperature 3°C • Pressure 5 bars • Marine type approvals
	Challenges
	<ul style="list-style-type: none"> • Limited space onboard • Fish quality depends on water circulation • Cannot stop fishing campaign



	Solution	Key points
 <p style="text-align: center;">Sylax+ VT</p>	<p>The solution was found with the Sylax butterfly valves (with cast Iron body GG25 & GGG40, EPDM and NBR liners and Alubronze Disc).</p> <p>Sylax one piece Shaft allows a self positioning of the disc witch insure a perfect shut off and guaranty a good regulation of the water circulation.</p> <p>Sylax body shape include a tongue and groove to help the liner to stay in position, thus providing the valve a very good reliability overtime even in hard conditions. The maintenance can also easily be done.</p> <p>All valve have an individual tag to be easily recognize and address to the right construction area, thus improving the shipyard production capacity.</p>	<ul style="list-style-type: none"> ✓ Easy maintenance ✓ Limited torques ✓ Traceability Tag ✓ 5 years warranty ✓ Worldwide sales network
	Approvals	